



Hali-Brite® L810 Solar Quick Install Guide



1. Remove contents from package and inspect.



2. Secure the mounting pipe to the mounting plate using supplied u-bolts.



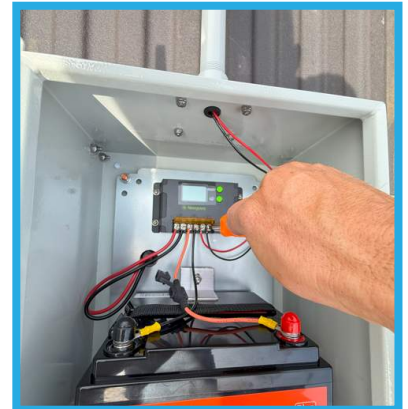
3. Secure the mounting plate to the fence post.



**Fully
Installed
Example**



4. Install the Obstruction Light to the enclosure by running the wires through the top hub and then tightening the pipe.



5. Connect the red and black wires to the charge controller.

6. Set the battery and solar enclosure onto the mounting pipe and position the panel towards the equator, tighten set screws.
7. Adjust the panel angle by using the pre-installed wing nuts, according to the enclosed "L810 Solar Angle Setting Guide"
8. Install the fuses and plug in the solar panel to the enclosure. Verify the charge controller indicator is cycling through various stages. Close and lock door. The product is now fully installed.

SCAN QR CODE
FOR FULL
INSTRUCTION
MANUAL AND
WARRANTY
INFORMATION



Sales and Technical Support:
1.800.553.6269
Sales@halibrite.com

📍 Hali-Brite, Inc.
1119 Madison Street
Brainerd, MN 56401

🌐 www.halibrite.com
☎ Ph: 218.454.0956
📠 Fax: 218.454.0972